



CONNECTICUT COLLEGE MASTER PLAN PROJECT

Phase 1: Discovery and Analysis

29 November 2017

Sasaki Team



Caitlyn Clauson

Principal-in-Charge
Planning Lead



Katia Lucic

Design Principal



Andrew Gutterman

Landscape Architect



Julia Carlton

Project Manager, Planner



Andy McClurg

Transportation Planner



Chris Sgarzi

Athletics & Rec Specialist

Strategic Plan – “Building on Strength”

Enhancing Academic Distinction

Goal 1: Education

Become a recognized leader in integrative education promoting the intellectual, social, professional, and civic development of every student.

- Expand opportunities for interdisciplinary teaching and learning, including potential precollege and master’s programs
- Enhance support for the five centers for interdisciplinary scholarship and consider new centers of distinction (e.g., in informatics)
- Continue improving classrooms to support new forms of teaching with technology

Goal 2: Research

Open new channels for groundbreaking research, scholarship, and creative work.

- Upgrade research facilities, labs, and other spaces in which faculty and students conduct their work
- Expand resources for research computing and scientific instrumentation

Goal 3: Arts

Advance the College’s distinction in the creative and performing arts.

- Renew Palmer Auditorium and other spaces for the arts as part of campus master plan
- Expand the mission and program of the Ammerman Center for Arts and Technology
- Bolster campus connections to Lyman Allyn Art Museum

Strategic Plan – “Building on Strength”

Enriching the Student Experience

Goal 1: Life and Career

Cultivate the talents of all students to lead lives of meaning and purpose.

- Take steps to relocate career office to central campus

Goal 2: Campus Living

Stimulate a more vibrant, four-year residential living and learning experience.

- Renovate and expand the College Center at Crozier-Williams
- Advance plan for improving residence halls as part of campus master plan
- Explore new options for apartment-style living
- Continue expanding spaces and programs that enhance the first-year residential experience

Goal 3: Athletics

Heighten the competitiveness, success, and integration of the College’s athletics programs.

- Develop plan for upgrading athletics facilities as part of campus master plan

Strategic Plan – “Building on Strength”

Supporting a Diverse, Just, and Sustainable Community

Goal 1: Full Participation

Empower an increasingly diverse community of students, faculty, and staff to thrive in their work and contribute to the flourishing of others.

- Increase endowed resources for the Center for the Comparative Study of Race and Ethnicity and relocate the Center to central campus
- Enhance support for, visibility of, and connections among campus centers and programs focused on identity and inclusion
- Generate near- and long-term accessibility plans in conjunction with campus master plan
- Explore the possibility of a second, accessible pedestrian bridge

Goal 2: Sustainability

Become a beacon of sustainability through careful stewardship of the College’s physical, natural, and human resources.

- Enhance capacity of arboretum as a vehicle for teaching and research in the natural sciences
- Open campus access to the Thames River for scholarship and recreation
- Consider developing a sustainable residential facility as part of master planning effort

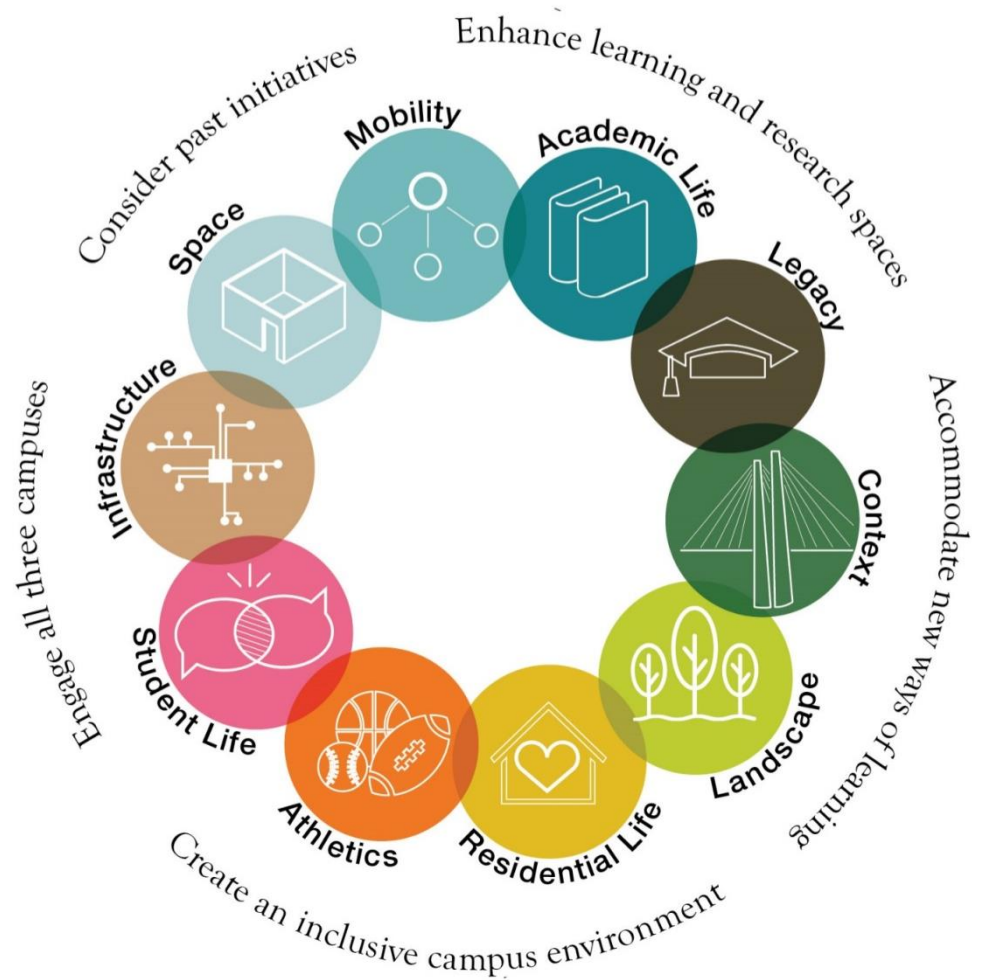
Goal 3: Financial Strength

Protect and grow the College’s financial resources.

- Plan and launch a capital campaign in support of the strategic plan
- Create revenue-generating initiatives that take advantage of the campus in summer

What Is a Master Plan?

- Physical manifestation of the Strategic Plan
- A multi-layered approach that analyzes the various campus systems
- Provides both near term recommendations and a long term vision for the campus
- Inform future capital campaigns
- Best plans are a product of the campus community – where you come in!



Schedule

JUL AUG SEP OCT NOV DEC JAN FEB MAR APR MAY



Phase 1

Discovery
& Analysis



Phase 2

Concept
Alternatives



Phase 3

Implementation
& Documentation

Master Plan Website - <http://projects.sasaki.com/conncollege/>

CONNECTICUT COLLEGE

ABOUT

PROCESS

RESOURCES

CONTACT

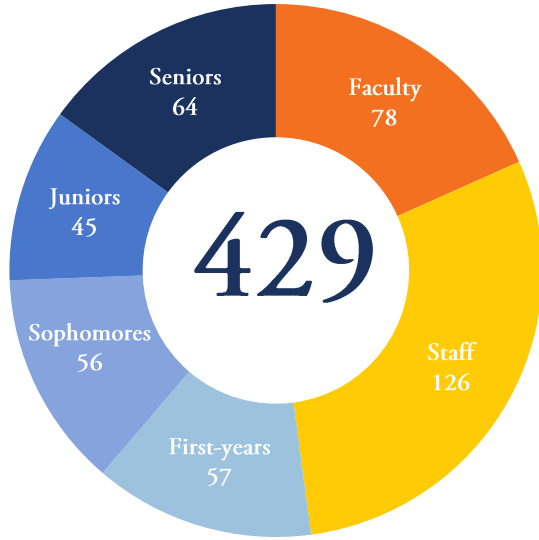


Connecticut College

Campus Master Plan

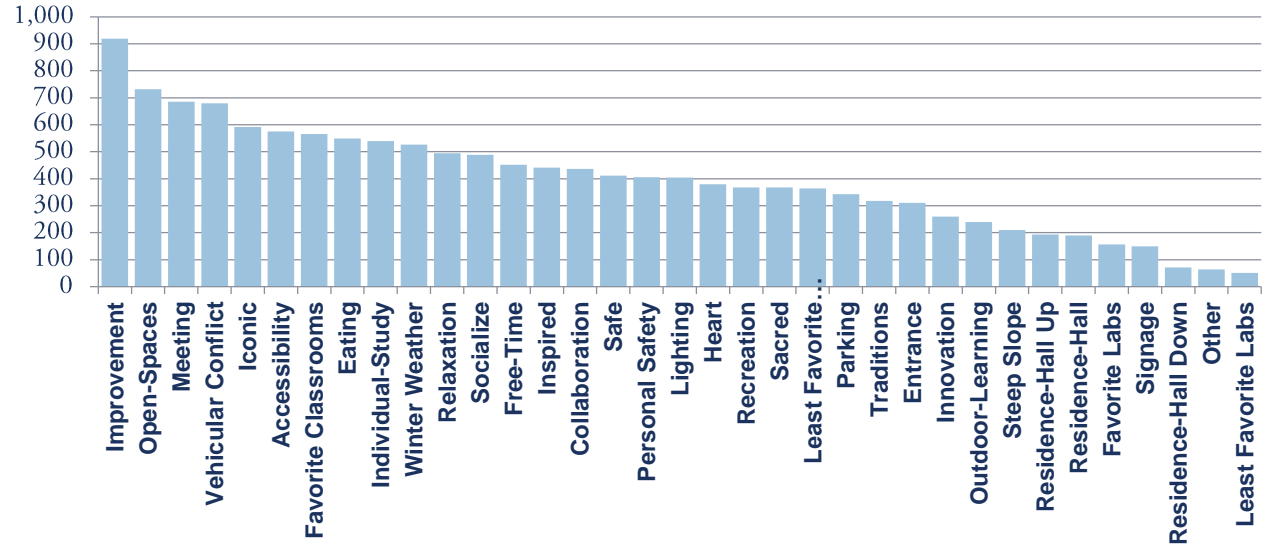
MyCampus Survey Respondent Information

Total Responses



12% of Student Body
16% of Overall Population

Total Number of Icons



KEY ANALYSIS FINDINGS

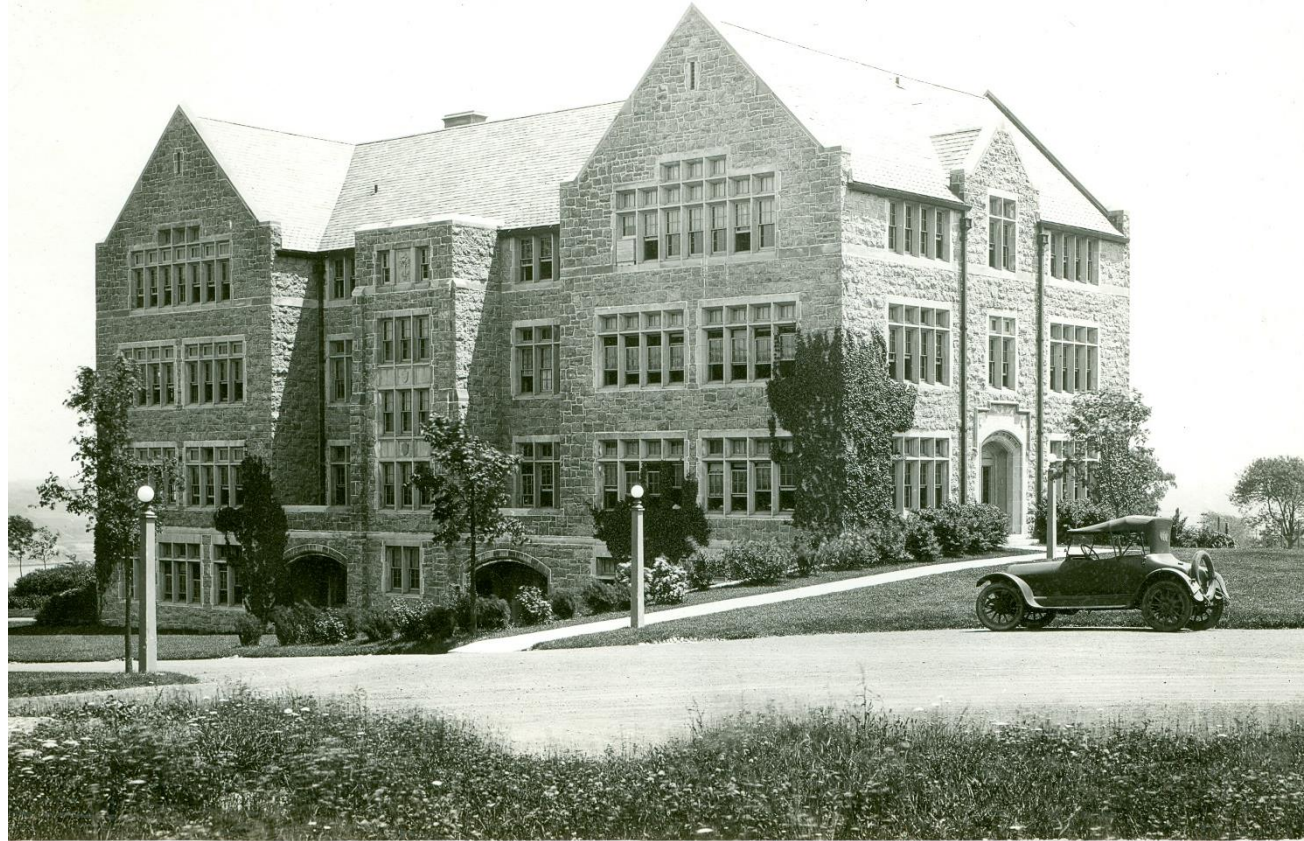
The background of the slide features a repeating pattern of stylized leaf silhouettes. The leaves are rendered in two colors: a dark blue and a white. They are scattered across the entire dark blue background, creating a textured, organic feel. The leaves vary in size and orientation, some pointing upwards and others downwards.



Development History

Early Years (1911 – 1925)

- 1911: Connecticut College founded
- 1913 - 1914: Collegiate gothic campus plan as proposed by Olmsted
- 1919: Arboretum Acquired



Domestic Education (1925-1950)

- 1929: Home Economics is most popular department
- 1940: 100% of students housed on campus



Intellectualism & Activism (1950-1975)

- 1954: Crozier Williams Student Center completed
- 1964: Initial Connquest Conference
- 1970: Conn becomes co-ed



Athletics & Tech (1975-1990)

- 1979: Computer system installed
- 1982: Conn joins NESCAC



Global Citizenship (1990-2016)

- 1993: Over 64% students participate in community service
- 1999: The Holleran Center for Community Action and Public Policy opens

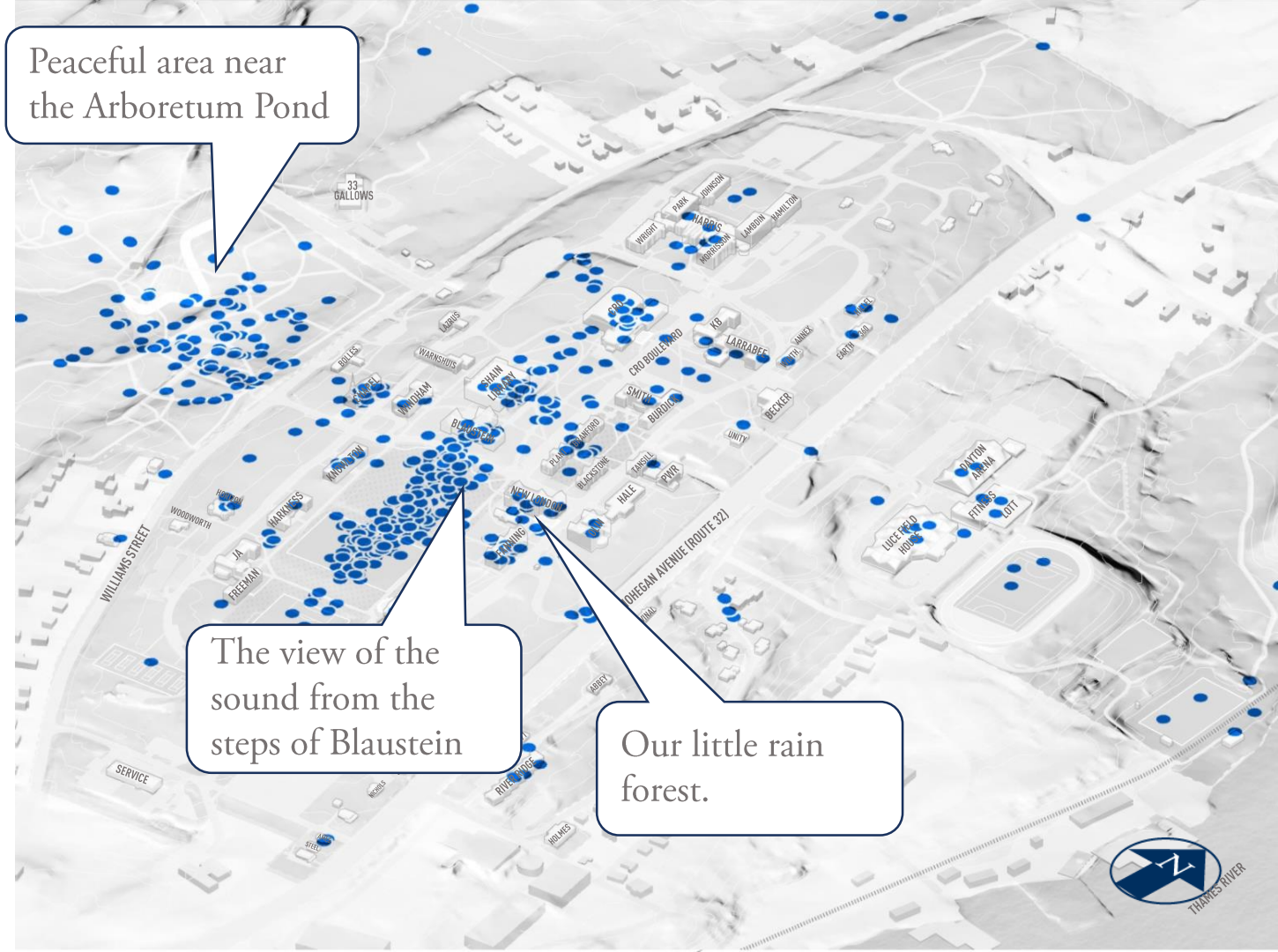




Campus Analysis

MyCampus

- What areas of campus do you consider iconic?



Peaceful area near the Arboretum Pond

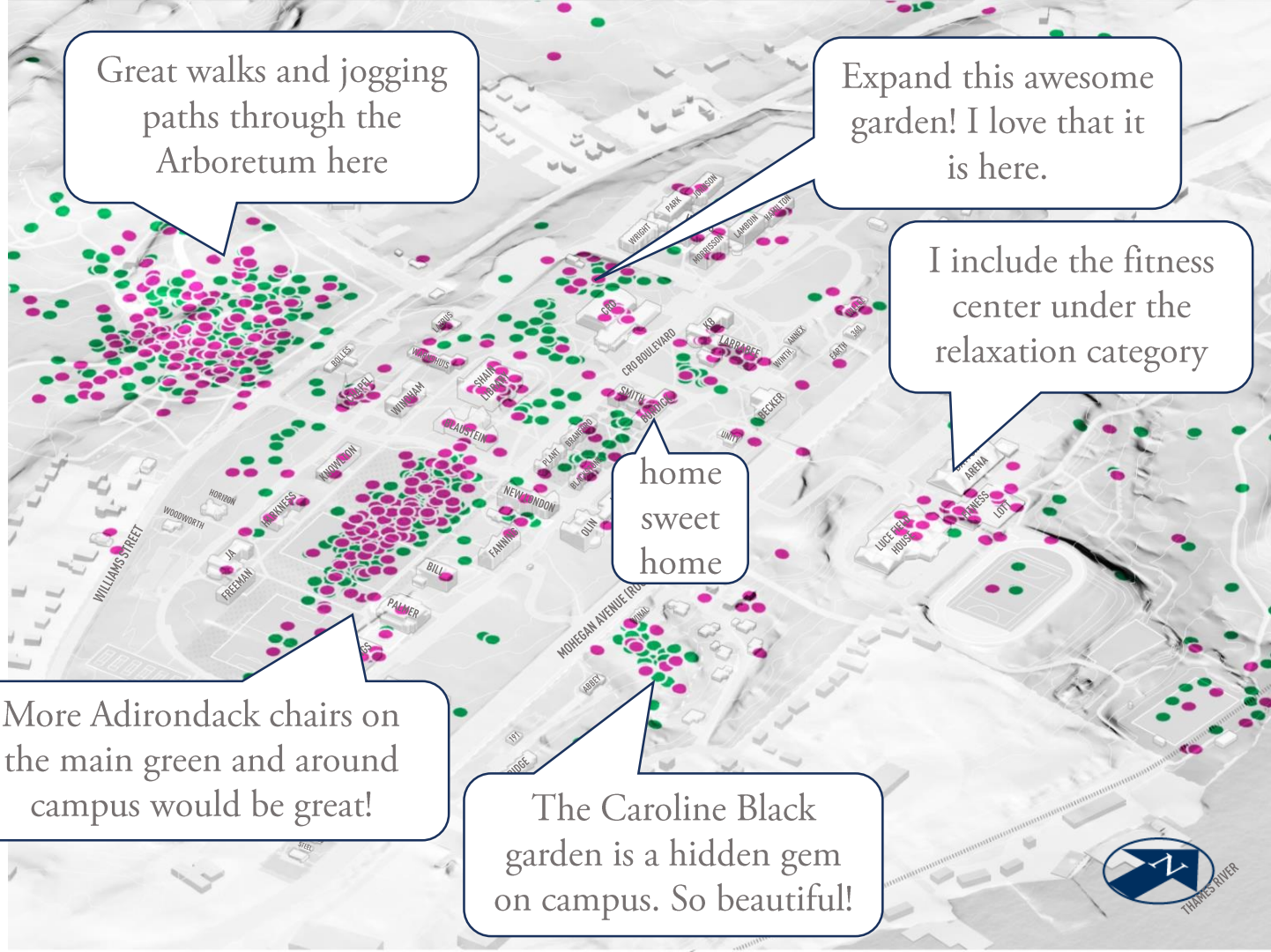
The view of the sound from the steps of Blaustein

Our little rain forest.



MyCampus

- What are your favorite outdoor **open spaces** or natural areas?
- What spaces do you use for comfort, **relaxation**, and renewal?



Great walks and jogging paths through the Arboretum here

Expand this awesome garden! I love that it is here.

I include the fitness center under the relaxation category

home sweet home

More Adirondack chairs on the main green and around campus would be great!

The Caroline Black garden is a hidden gem on campus. So beautiful!







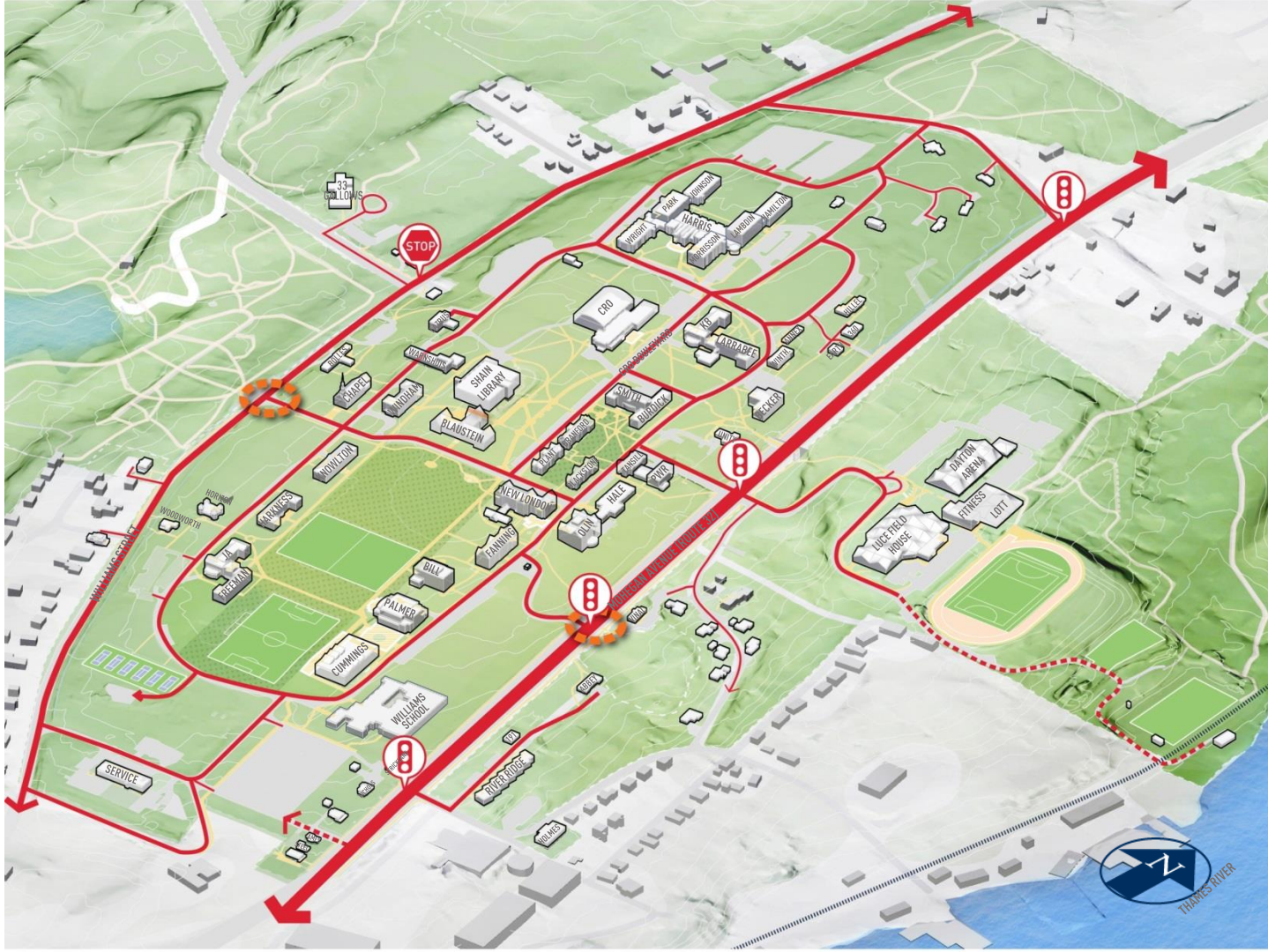
Open Space Structure

- Concentration of open space assets along the central ridge and connected to Native Plant Collection
- Tempel Green serves as the iconic heart of the campus
- Spaces north of Chapel Way and at the perimeter lack cohesiveness in character and specificity of purpose



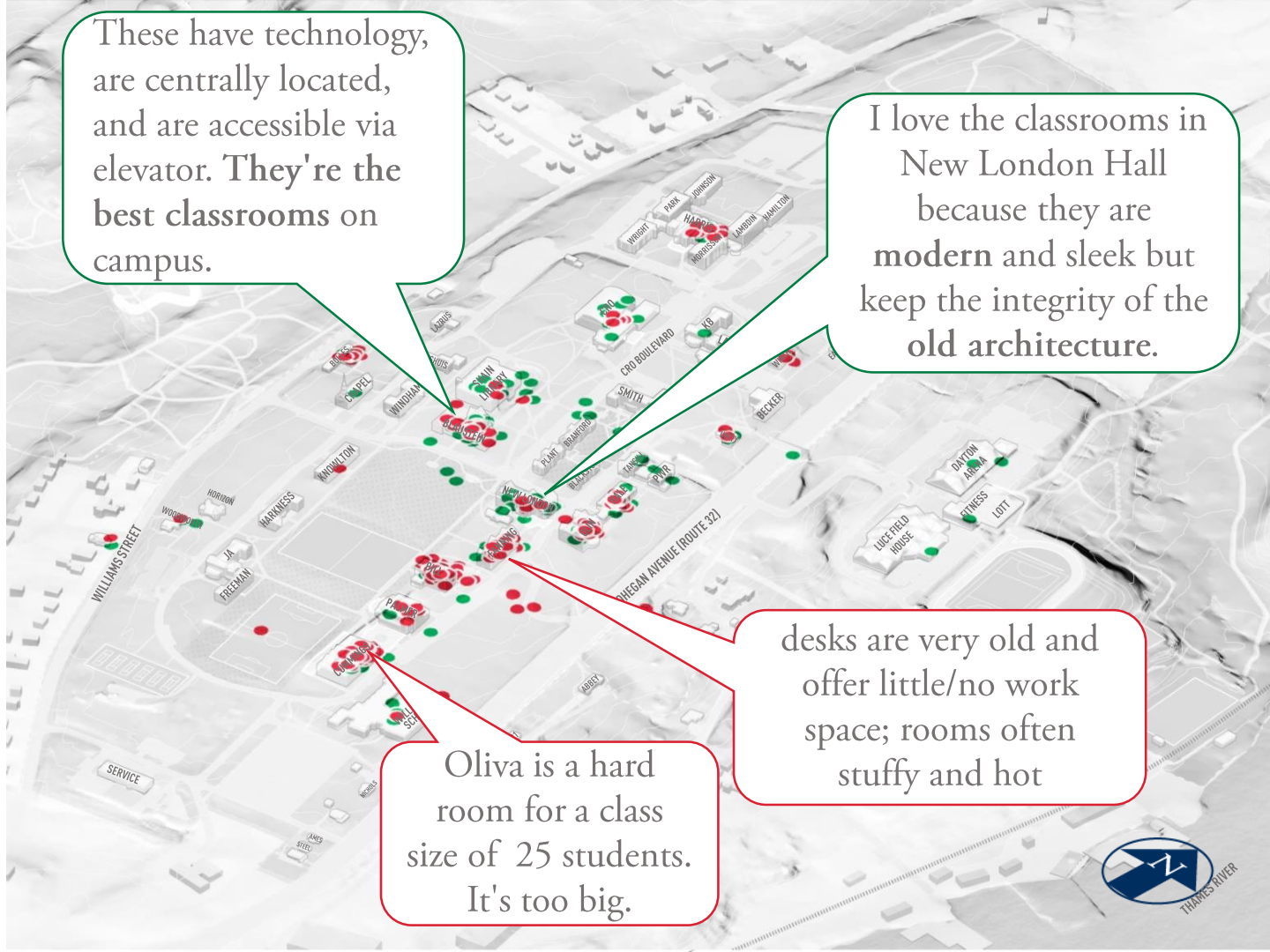
Internal Vehicular Circulation Network

-  Campus Gateways
-  Primary Vehicular Circulation
-  Secondary Vehicular Circulation
-  Stop Lights



MyCampus

- Where are your **favorite classrooms**?
- Where are your **least favorite classrooms**?



These have technology, are centrally located, and are accessible via elevator. They're the best classrooms on campus.

I love the classrooms in New London Hall because they are modern and sleek but keep the integrity of the old architecture.

desks are very old and offer little/no work space; rooms often stuffy and hot

Oliva is a hard room for a class size of 25 students. It's too big.



MyCampus

- Where is your favorite space to **gather socially?**

When I lived in Knowlton I spent a lot of time with my housemates in the common room. The piano was fun to play and hear other people play on.

Cro is great, but I wish it looked more modern like most other school's student unions.

meals with friends

PLEASE CAN WE HAVE APARTMENTS ABLE TO WITHSTAND MORE THAN 25 PEOPLE.



MyCampus

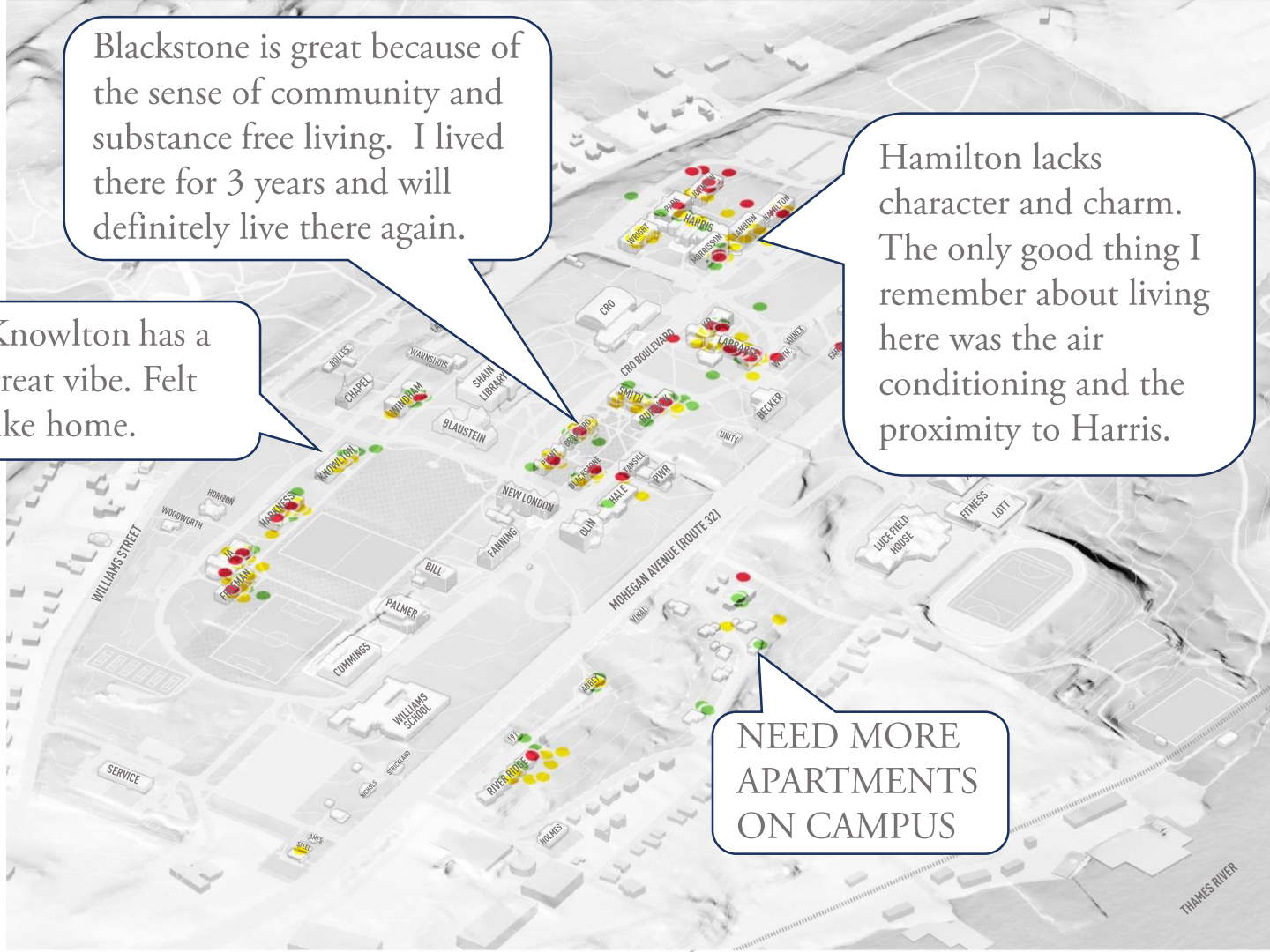
- Where have you **lived on campus**?
- **Favorite** place?
- **Least favorite** place?

Knowlton has a great vibe. Felt like home.

Blackstone is great because of the sense of community and substance free living. I lived there for 3 years and will definitely live there again.

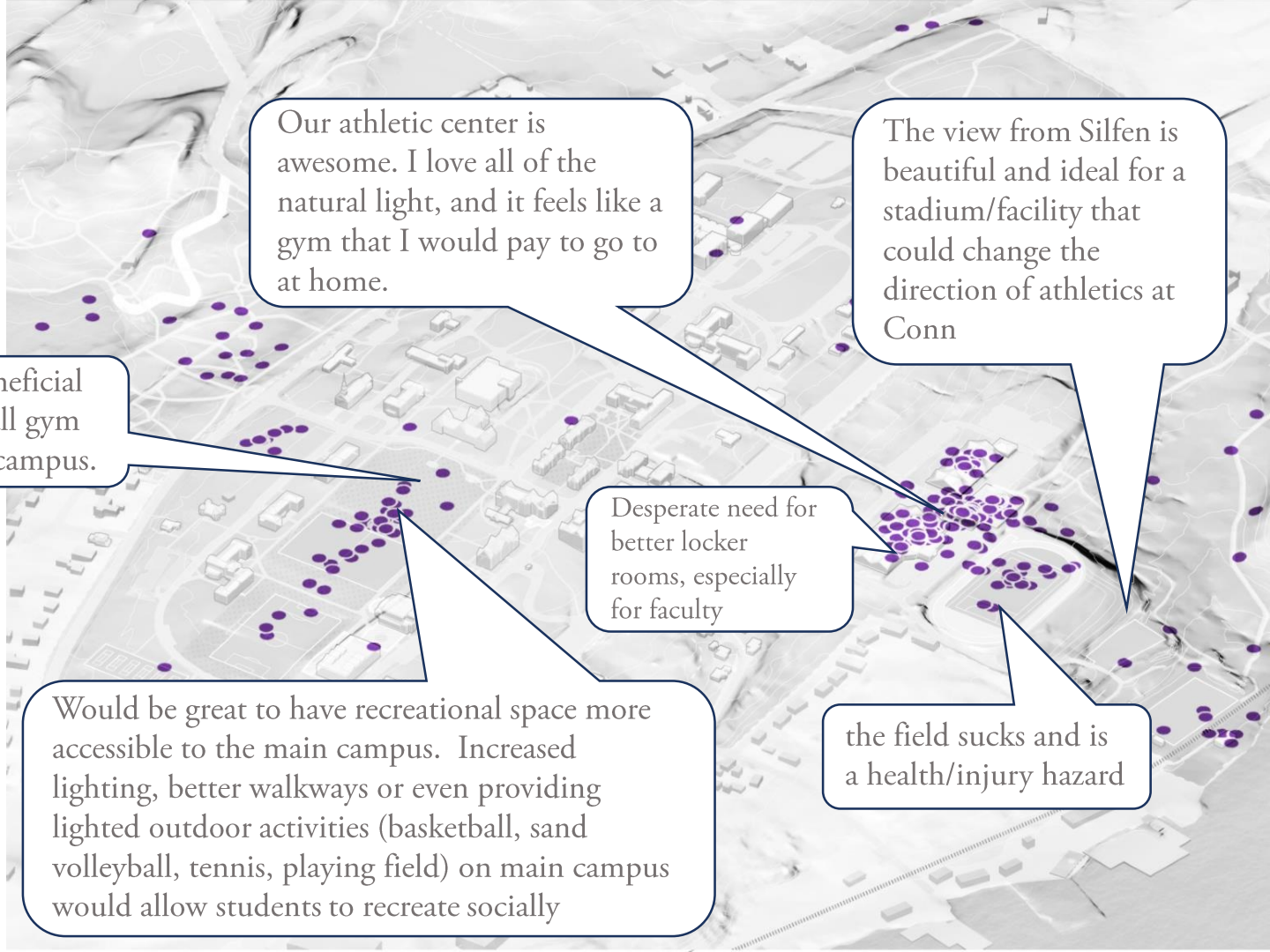
Hamilton lacks character and charm. The only good thing I remember about living here was the air conditioning and the proximity to Harris.

NEED MORE APARTMENTS ON CAMPUS



MyCampus

- Where are your **favorite recreation/athletic spaces?**



Our athletic center is awesome. I love all of the natural light, and it feels like a gym that I would pay to go to at home.

The view from Silfen is beautiful and ideal for a stadium/facility that could change the direction of athletics at Conn

Would be beneficial to have a small gym on the main campus.

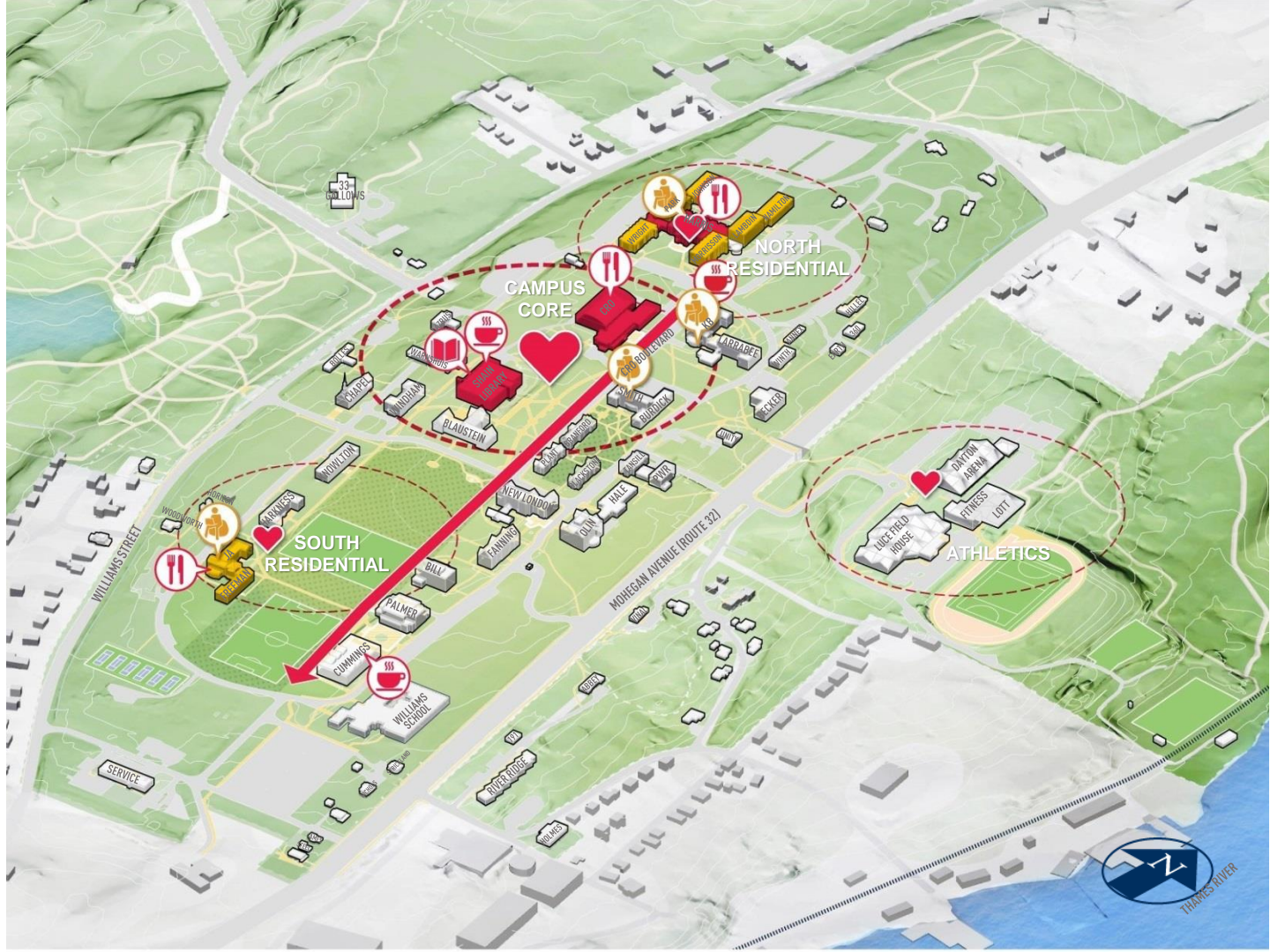
Desperate need for better locker rooms, especially for faculty

Would be great to have recreational space more accessible to the main campus. Increased lighting, better walkways or even providing lighted outdoor activities (basketball, sand volleyball, tennis, playing field) on main campus would allow students to recreate socially

the field sucks and is a health/injury hazard

Campus Life Synthesis

-  Campus heart
-  Main Pedestrian Spine
-  Student Life
-  Cafe
-  Library
-  Dining
-  Lounge



OPEN HOUSE TABLE ACTIVITY

The background of the slide features a repeating pattern of stylized leaf shapes. Some leaves are solid dark blue, while others are light blue outlines. The leaves are scattered across the dark blue background, creating a textured, organic feel.

Activity

- Break out into the four groups / tables
 - Landscape & Open Space
 - Connectivity
 - Academic Life
 - Campus Life
- Map and discuss opportunities on campus associated with each of these areas
- After 10 minutes, you'll rotate to the next table
- We'll regroup at the end and review common themes